


Z1001 Quick Install Guide

— 、 Zigbee configure

1. Open the Configuration Tool

 MLB-Z1001-Configuration Tool_v2.1-2014-08-11.exe

2. Setup the COM Port Setting.



3. Configuration Tool Guide.

i. Serial Number High & Low :

this unit's SN (High & Low)

ii. Destination Address High & Low :

Assign the message sent to the particular unit (Z1001 or Z4001 either),
Broadcast setting is (High: 0, Low: FFFF)

iii. NetWork ID :

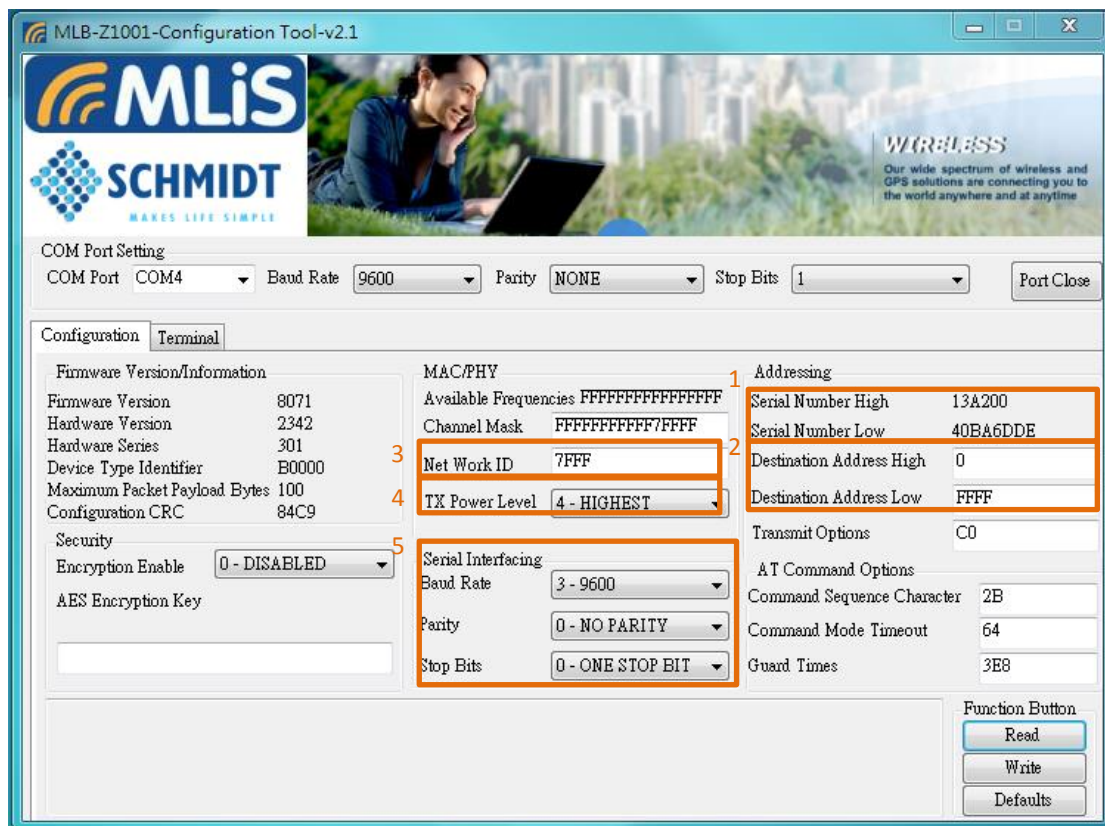
Only the units set the same NetWork ID can receive message, that can explain as
group ID

iv. Tx Power Level :

RF Power Level, as the literal meaning said.

v. Serial Interfacing :

Serial Port interfacing, as the literal meaning said.



4. Click the 'Write' button when every setting has been done.